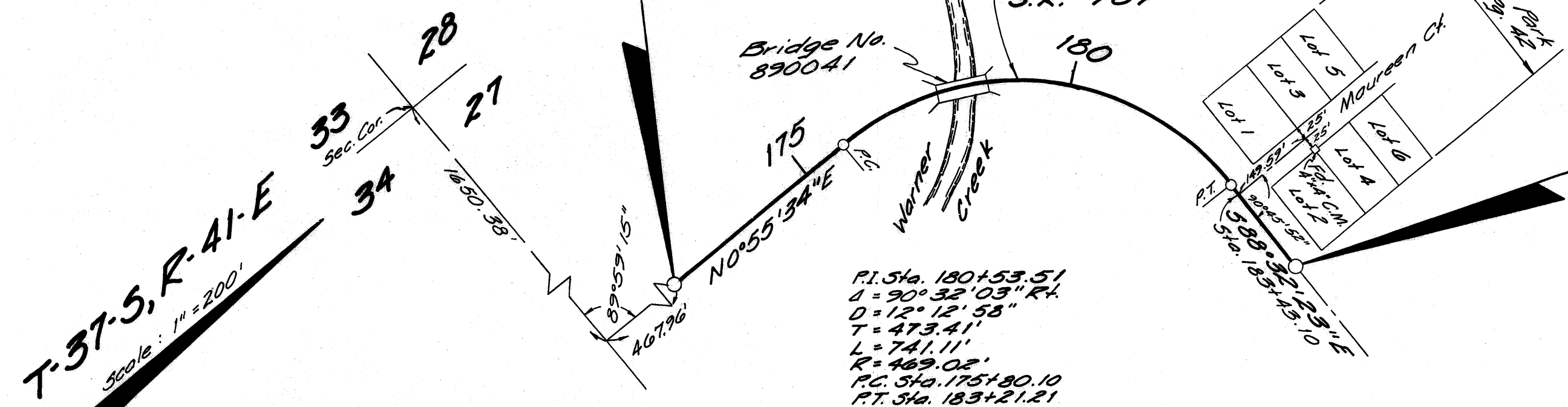


**BEGIN SURVEY  
STA. 172+00.00**



FILED FOR RECORD  
MARTIN COUNTY, FLA.

94 OCT 9 AID: 01

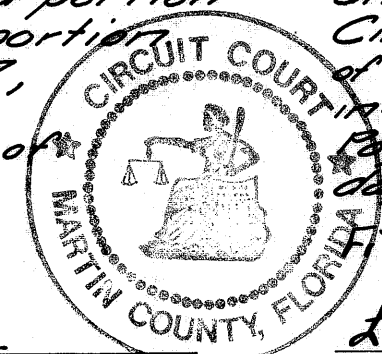
LOUIS V. ISAACS  
CLERK OF THE CIRCUIT COURT  
BY Charlotte Burkley D.C.

**END SURVEY  
STA. 185+00.00**

Returned  
DEPARTMENT OF TRANSPORTATION  
ACQUISITION DEPARTMENT  
2800 SOUTH ANDREWS AVENUE  
FORT LAUDERDALE, FLORIDA 33315

Note:  
1) Bearings taken from 89030-2508.  
2) Date of Survey, 8-30-79.

I, Bruce L. Gordon, as Director of Administration of the State of Florida Department of Transportation, do hereby certify that this map is the Official Map of Location and Survey of a portion of Section 89030 designated as a part of State Road 707 in Martin County, Florida; Said portion of Section 89030 including Warner Creek Bridge Number 890041 and approaches in Section 27, Township 37 South, Range 41 East.  
Prepared and adopted by the State of Florida Department of Transportation under provisions of Section 335.02, Florida Statutes of 1955.



Filed for record in the Office of the Clerk of the Circuit Court for the County of Martin, State of Florida, Book 9, Page 79, on the 9th day of October, A.D. 1984  
File: 531126

*Bruce L. Gordon*  
Director of Administration  
State of Florida  
Department of Transportation

Attest: *Stephanie Jefferson*  
Executive Secretary

Approved: *W.A. [Signature]*  
Engineer of Right of Way  
Date: September 6, 1984

*Louise V. Isaacs*  
Clerk of the Circuit Court  
Martin County, Florida.  
By *Charlotte Burkley D.C.*